



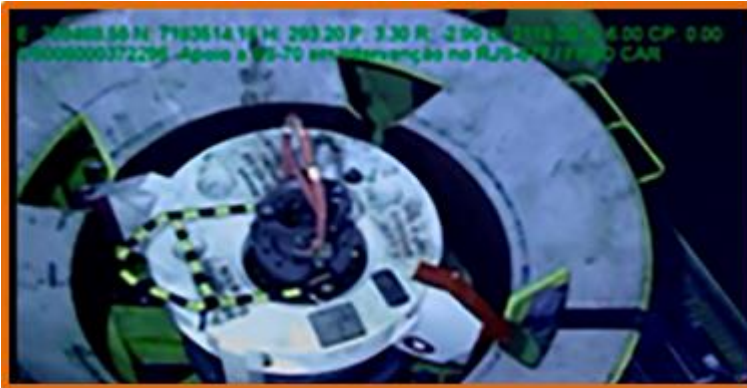
“Whenever you see a successful business, someone once made a courageous decision.”

- Peter Drucker

**ENGINEERING TOMORROW. TODAY.**

IMAGES: SUBSEA ROV TREE CAPS & STD VCM © AKER SOLUTIONS. ALL RIGHTS RESERVED.

- **EXPERTISE IN FIELD PROVEN SOLUTIONS DEVELOPMENT.**



IMAGES: MERO JETTING BASES © TECHNIPFMC. ALL RIGHTS RESERVED.



## Jetting Bases [GRA's]



## NEW PETROBRAS BAJA SYSTEM.

550 kips of Moon Pool Hanger Capacity (with in balance OV Mechanical load pins). 1<sup>st</sup> Reinstallable Funnel System. 1<sup>st</sup> Retrievable Baja Mudmat system.





## SCOPE LIST

### ■ 01 - Concept Design and FEED

Front-End Engineering Design [FEED]  
Conceptual Design & Product Development  
3rd Party Design Validation  
BID/ Proposal Concepts

### ■ 02 – [FEM] Finite Element Design Evaluation

Pressure Vessel Design and Analysis  
Linear, Non-Linear & Structural Analysis  
Metal to Metal Seal Analysis  
Modal Analysis  
Implicit or Explicit Transient Dynamic Analysis  
Frequency Response, Fatigue, Flexibility & Thermal Analysis  
Seabed Foundation Analysis  
Rubber and Elastomer Components Analysis  
Bucking Analysis

### ■ 03 - Detailed Engineering

3D Modeling & 2D Drafting  
[GD&T] Geometric Dimensional and Tolerance Analysis  
Coating & Cathodic Protection Calculation  
Dimensional and Weight Estimation  
Material Selection

### ■ 04 - Specifications & Technical Documents

Operation & Maintenance Manuals  
Assembly & Test Procedures (FAT, SIT)  
Design Qualification Procedures (DQT, PVT)  
Failure Mode Effects and Criticality Analysis (FMECA)  
Failure Mode Effects Analysis (FMEA)  
Storage Procedures  
Lifting and Transportation Procedures  
Product Manuals  
Manufacturing Process Procedures

### ■ 05 – MM&R and Installation Engineering

Sea Fastening Design & Operational Assistance  
Engineering Dispositions  
UP-Grade Projects

### ■ 06 – On Site Support

Manufacturing & Qualification Interface  
Engineering Resources Allocation

### ■ 07 – Business

Support in Technology RoadMapping [TRM] formation  
Pre-qualification & development of suppliers  
Evaluation of prospective supplier bids

CHECK OUR MILESTONES AT **ULTRHA.COM.BR**

MEET OUR HOURLY RATE HERE.

falecom@uth.ind.br

- **EXPERTISE IN FIELD PROVEN SOLUTIONS DEVELOPMENT.**

**CLICK TO CHECK OUR  
VIDEO**



— ENGINEERING TOMORROW. **TODAY.**

IMAGE: EQUINOR TROLL B RISER BASE © EAB ENGINEERING. ALL RIGHTS RESERVED.



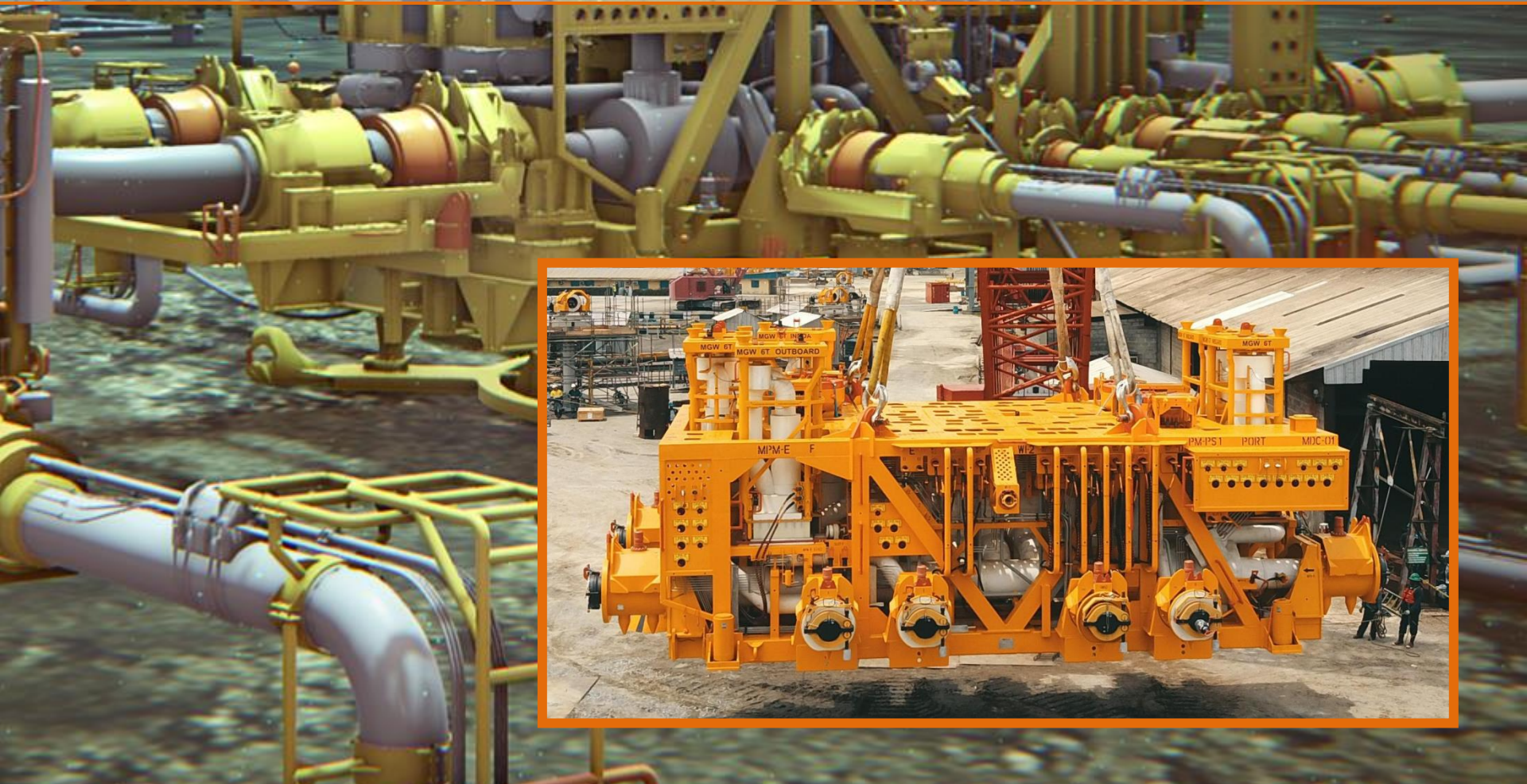
**SPS & SURF**

**SUBSEA PRODUCTION SYSTEMS SOLUTIONS.**





IMAGE: TOTAL E&P EGINA MANIFOLD © TECHNIPFMC. ALL RIGHTS RESERVED.



# TIE-IN & CONNECTION SYS

SUBSEA STRUCTURES, MANIFOLDS, PLETs, SLEDs.





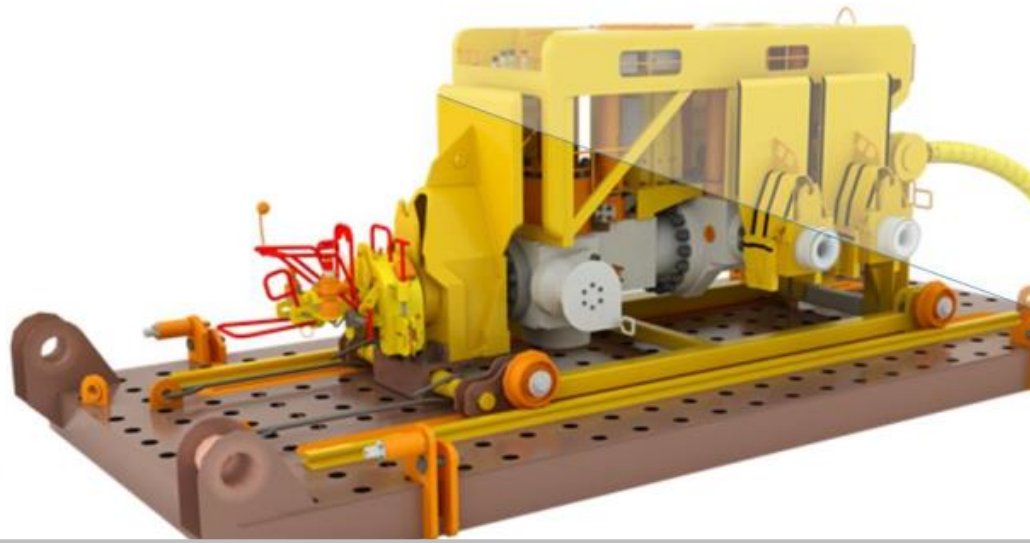


**A NEW RANGE OF SOLUTIONS.**

**CORE COMPONENTS**

**SUBSEA CONNECTORS, VALVES, SWIVEL & ACTUATORS.**





**U**LTRHA®